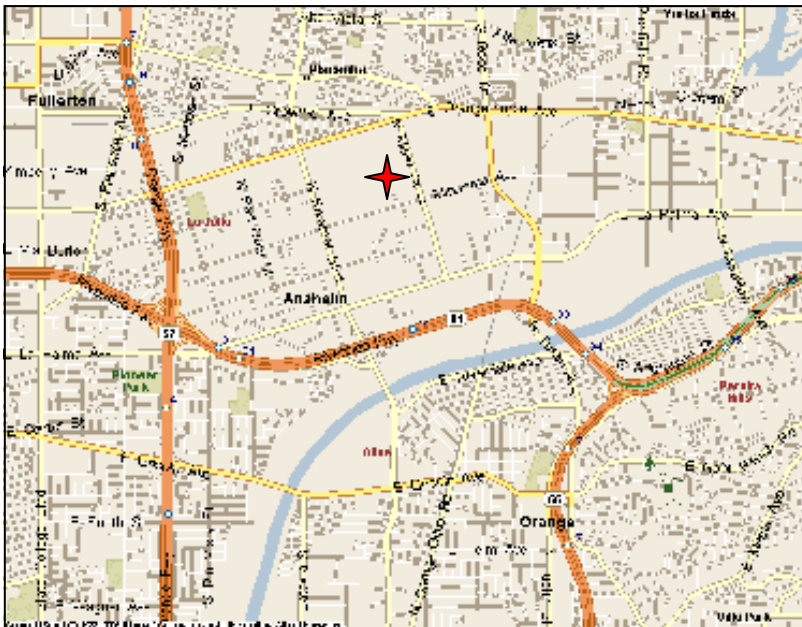


ZUMA BUSINESS PARK

175,000 Square Feet of Industrial / Office Suites



Miralo ma Avenue - Anaheim, CA



Property Features:

Industrial Units:

- *High Image Business Park*
- *Gate d complex with 24 hour access*
- *Responsive Management*
- *Units range between 600 to 5,000 sf*
- *10% to 100% improved office area*
- *18' to 20' warehouse clearance*
- *High Speed Internet Access*
- *100 amp power*

Office Suites:

- *Street frontage*
- *Private restrooms*
- *Coffee bar with custom cabinets*
- *Near the Riverside (91), Costa Mesa (55) and Orange (57) Freeways*

For Leasing Information Please Contact:

Leasing Office (714) 237-7032

Susan Lee — slee@cedarem.com

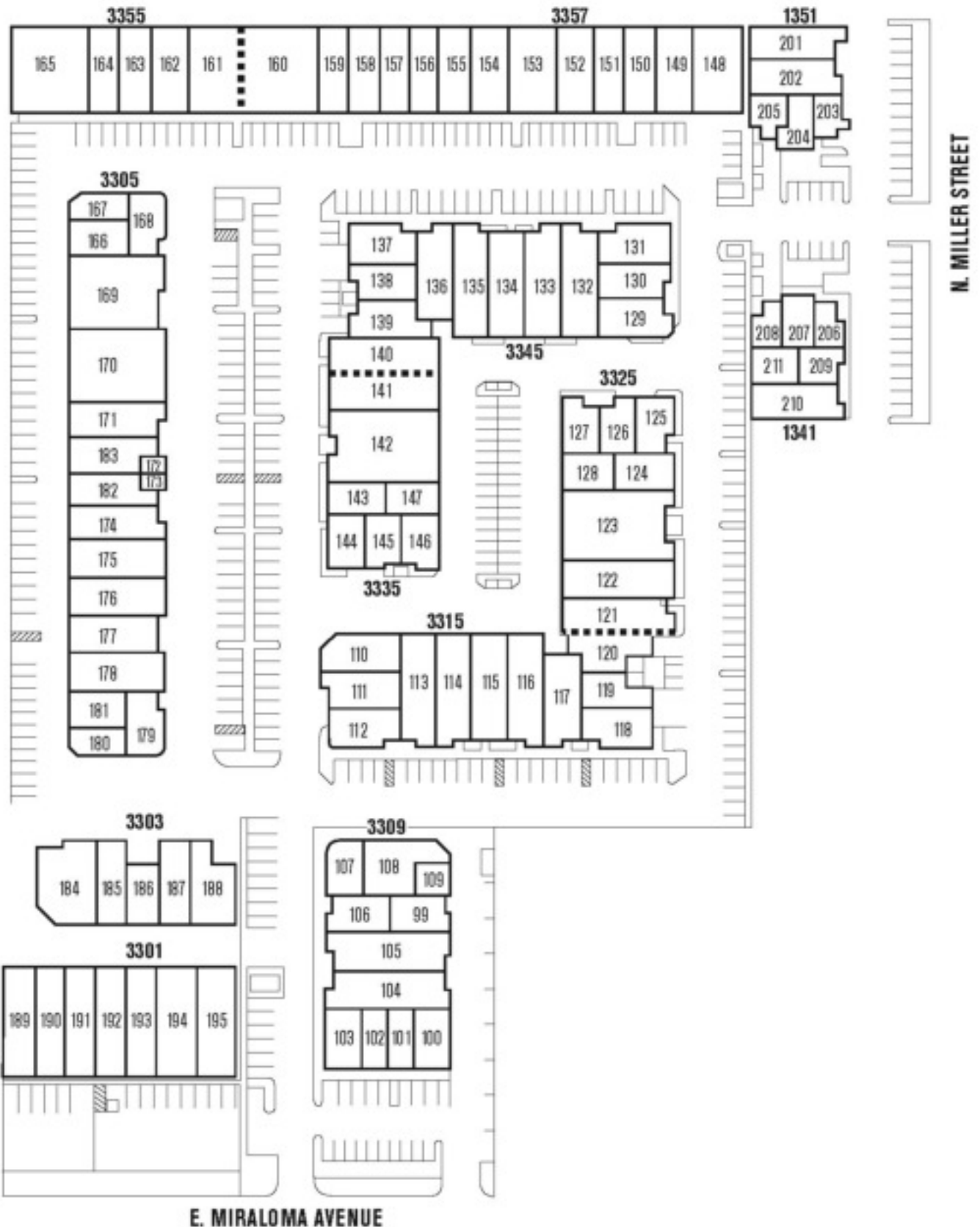
www.cedarem.com

4055 La Palma Ave., Suite H-1, Anaheim, CA 92807



ZUMA BUSINESS PARK

Mira l o m a Ave . & Mille r Stre e t—Ana he im , Ca lifo mia



The information above has been obtained from sources believed reliable. While we do not doubt its accuracy, we have not verified it and make no guarantee, warranty or representation about it. It is your responsibility to confirm its accuracy and completeness. Any projections, opinions, assumptions or estimates used are for example only and do not represent the current or future performance of the property. The value of this transaction to you depends on tax, and other factors which should be evaluated by your tax, financial and legal advisors. You and your advisers should conduct a careful, independent investigation of the property to determine to your satisfaction the suitability of the property for your needs.