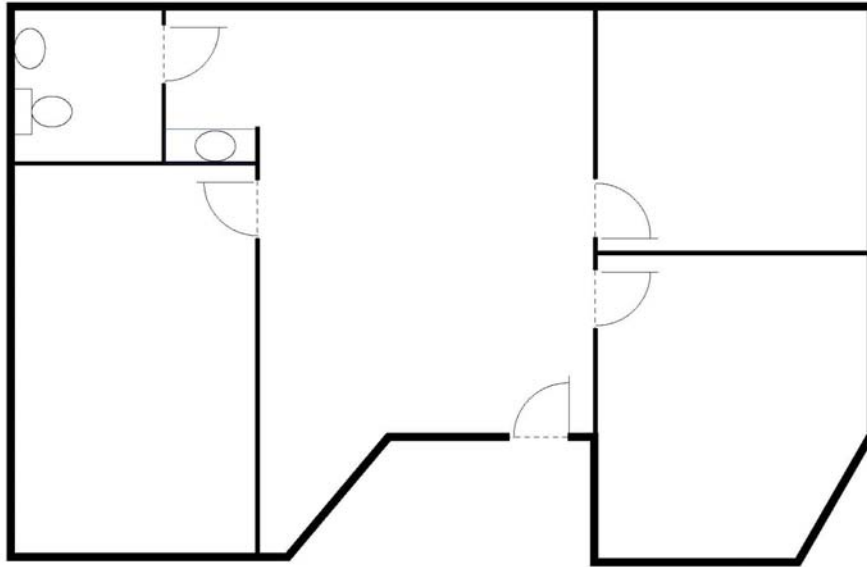


**Lease All La Palma
4071 E. La Palma Ave., Suite A, Anaheim
± 900 square feet**



For Leasing Information Please Contact:

Solita Hart/shart@cedarrem.com

Susan Lee/slee@cedarrem.com

www.cedarrem.com

(714) 237-7032

Leasing Office

4055 E. La Palma Ave., Suite H-1, Anaheim, CA 92807



The information above has been obtained from sources believed reliable. While we do not doubt its accuracy, we have not verified it and make no guarantee, warranty or representation about it. It is your responsibility to confirm its accuracy and completeness. Any projections, opinions, assumptions or estimates used are for example only and do not represent the current or future performance of the property. The value of this transaction to you depends on tax, and other factors which should be evaluated by your tax, financial and legal advisors. You and your advisers should conduct a careful, independent investigation of the property to determine to your satisfaction the suitability of the property for your needs.